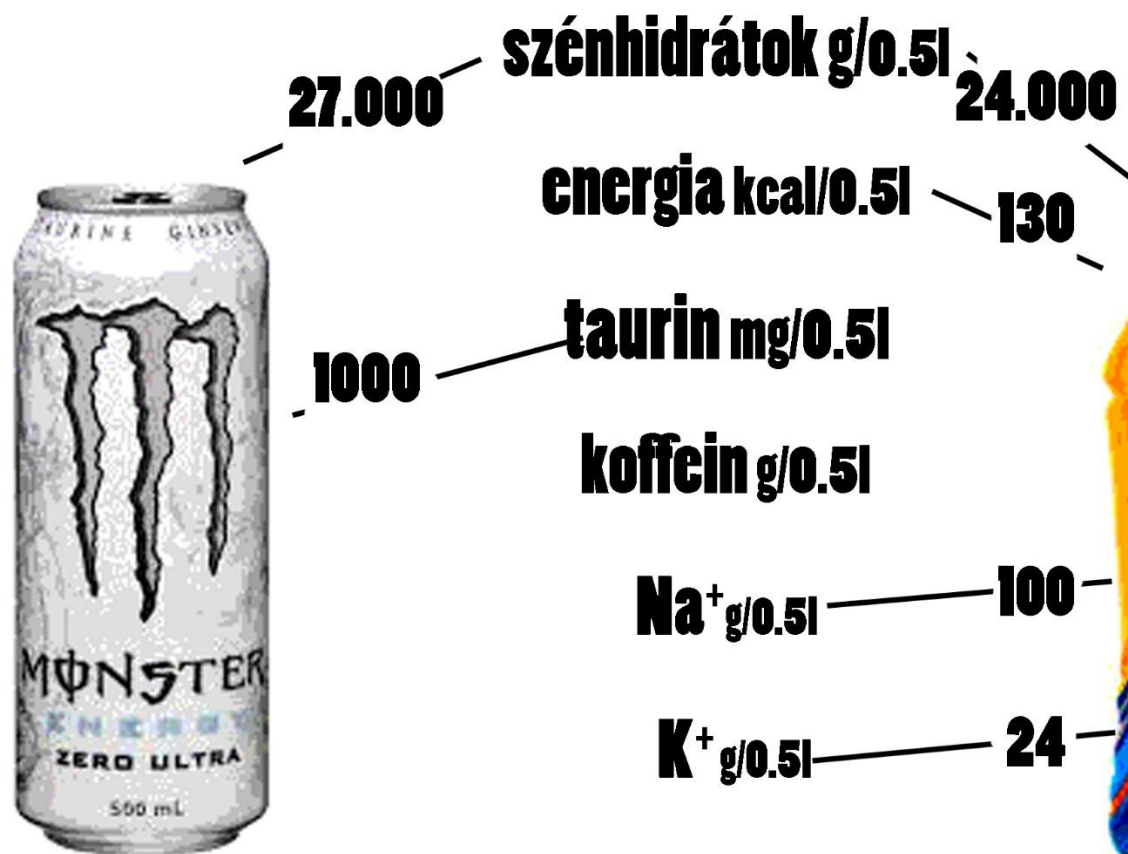




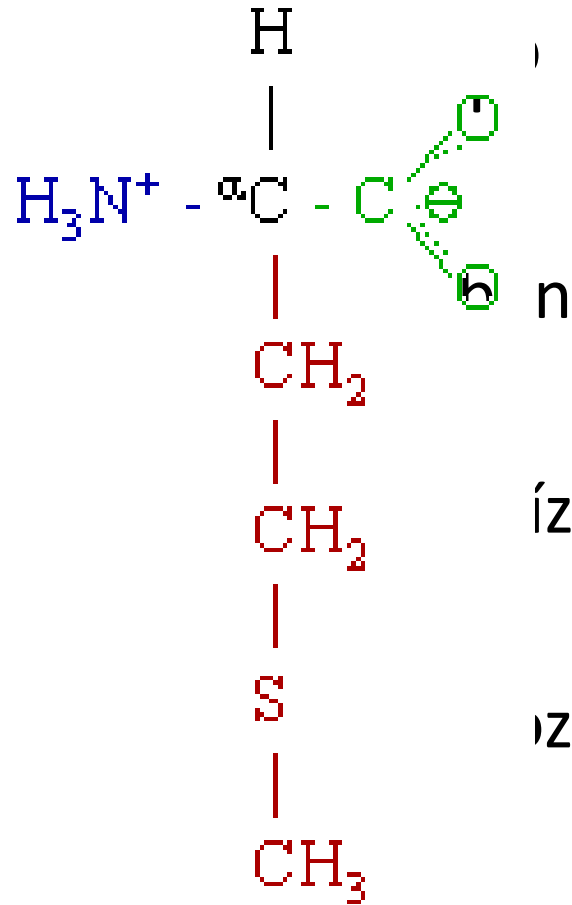
Miért (ne) igyál soft drink-eket?

Altvater Lili  
Szücs Laura



Mi is

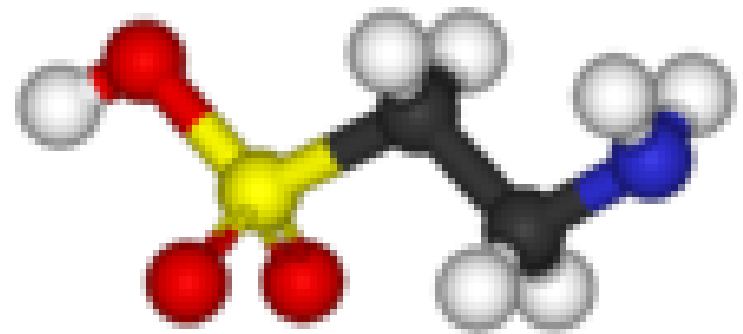
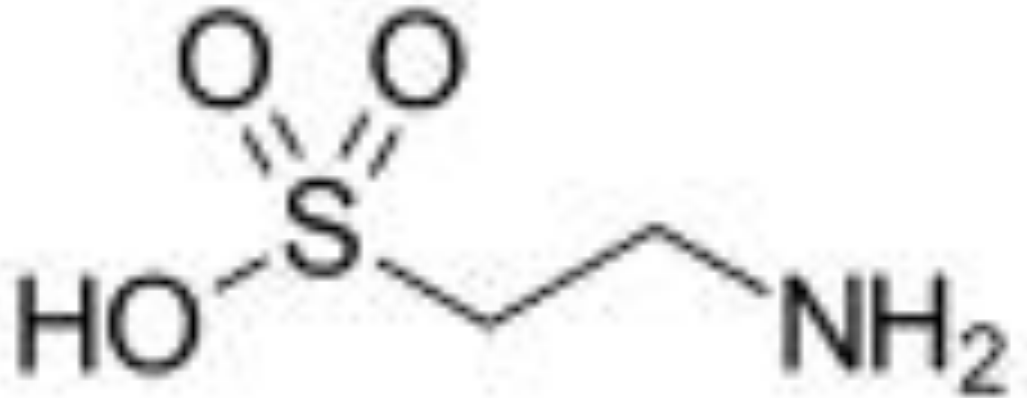
- Esszenci
- Amir
- Alkohol
- Epes
- Kalci
- Inzul
- Antic
- Hasf



Methionine  
(Met / M)

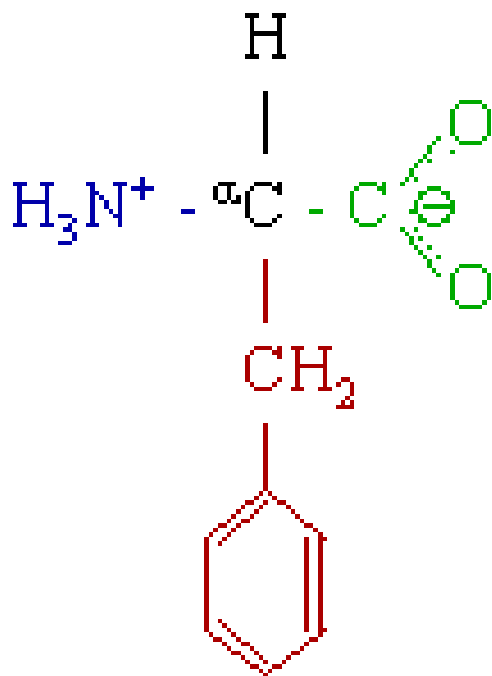
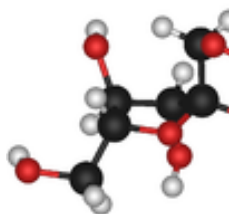
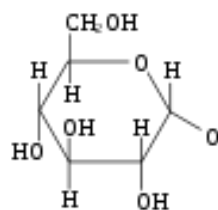
n  
ízben  
ízása

oz



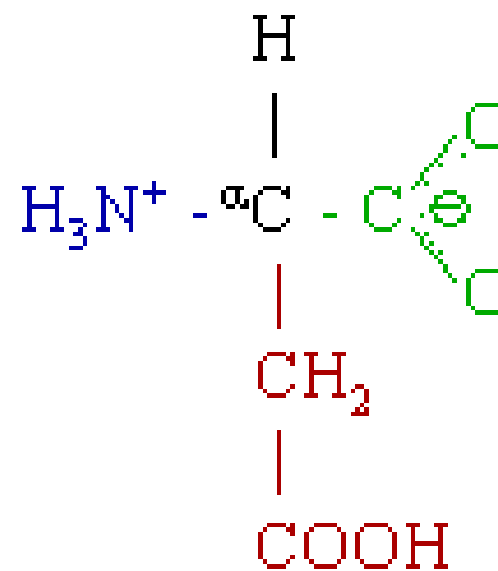
# Akkor igyunk cukormenteset! Vagy mégse?

szacharóz



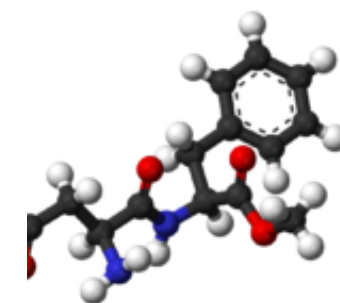
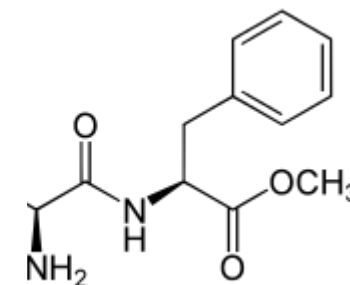
Phenylalanine  
(Phe / F)

stevia




Aspartic Acid  
(Asp / D)

irtám



A close-up, high-contrast photograph of a person's hands holding a large, blood-stained knife. The person is wearing a white, button-down shirt. The lighting is dramatic, highlighting the texture of the fabric and the glistening blood on the blade and the person's fingers. The background is dark and out of focus.

Akkor féljünk?

The image shows four green cans of 'Cannabinabis Energy Drink' lined up. Each can features a pink lotus flower logo at the top. The text on the cans is arranged in two lines: 'CANNINABIS' on the top line and 'ENERGY DRINK' on the bottom line. The cans are slightly out of focus, and the background is a plain white surface.

**Köszönjük a figyelmet!**